

Secure and extract  
small stone fragments.



**NCompass<sup>®</sup>**  
NITINOL STONE EXTRACTOR



[www.cookmedical.com](http://www.cookmedical.com)

# NCompass<sup>®</sup>

## NITINOL STONE EXTRACTOR

The NCompass<sup>®</sup> Nitinol Stone Extractor, featuring multiwire geometry, is designed to improve stone-free rates.

The unique multiwire geometry provides a traditional 3 or 4 wire basket design at full deployment, while partial closure reconfigures the basket to provide the exceptionally tight weave of a 12 or 16 wire basket. The duality of the NCompass extractor allows both routine capture and extraction of intact stones and features an improved design to capture multiple small fragments following intracorporeal lithotripsy.

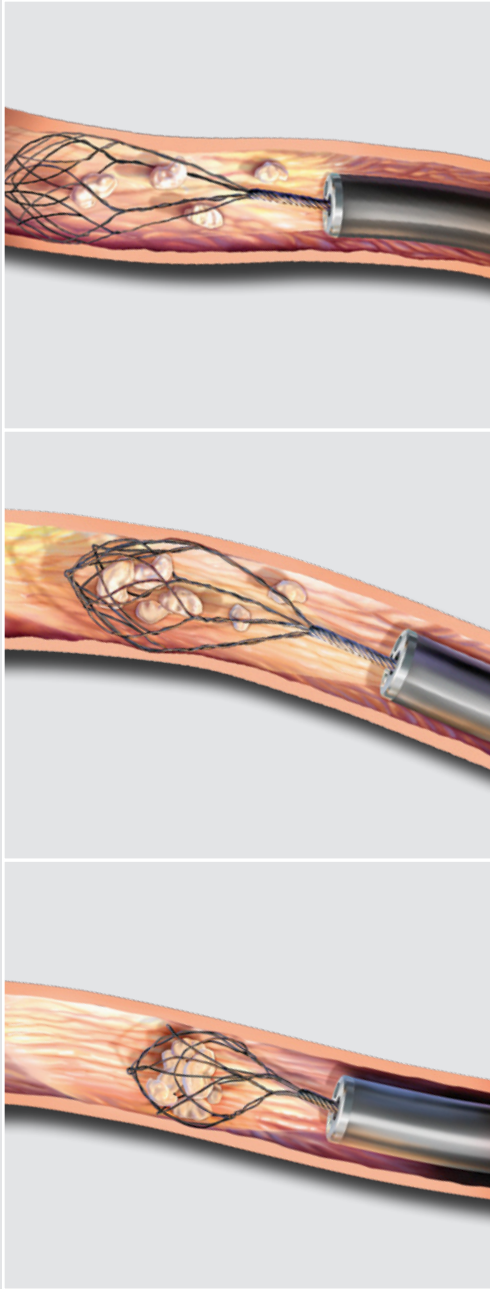
When used in conjunction with the latest minimally invasive stone-treatment technologies, the NCompass Nitinol Stone Extractor will assist your efforts in rendering the patient stone free.

### Features

---

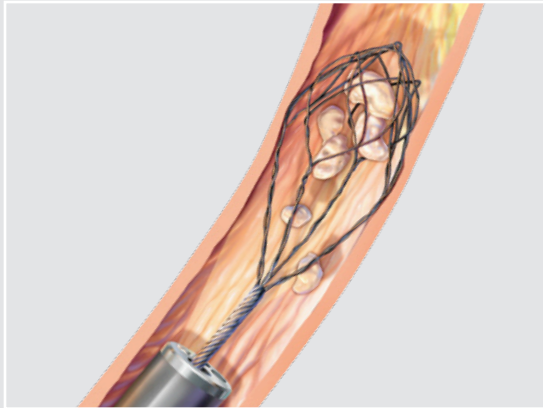
|                              |                                                                                                                                                                                                                               |
|------------------------------|-------------------------------------------------------------------------------------------------------------------------------------------------------------------------------------------------------------------------------|
| Intricate Multiwire Geometry | Dual basket design: a standard 3 or 4 wire design at complete deployment, an intricate 12 or 16 wire design during closure. At full deployment, distal portion provides a netting effect to help prevent migration of stones. |
| Tipless Design               | The tipless basket design follows in the tradition of the NCircle <sup>®</sup> basket. Atraumatic design reduces trauma to surrounding tissue.                                                                                |
| Nitinol Alloy                | Resilient memory characteristics retain preformed shape when deployed. Kink resistance creates a durable basket to withstand multiple deployments. Flexibility allows expedient capture and release of stones.                |
| Flexible Sheath              | Permits continuous, full deflection of the ureteroscope during stone manipulation.                                                                                                                                            |
| 1.7 Fr Sheath                | Allows improved irrigation flow through endoscopic working channel.                                                                                                                                                           |

---



## Procedure

- 1 At complete deployment the NCompass stone extractor features standard openings at the proximal portion of the basket to allow stone entry.
- 2 The multiwire area at the distal portion of the basket captures the stones as the basket is withdrawn through the ureter, preventing stone migration.
- 3 As the NCompass stone extractor is gradually closed, the intricate multiwire geometry completely encompasses the stones for secure capture and extraction.



## NCompass®

NITINOL STONE EXTRACTOR

In 1998, Cook Medical introduced the world to NCircle nitinol tipless basket technology—a revolutionary advance in the area of stone manipulation. The development of the NCompass Nitinol Stone Extractor demonstrates our continued commitment to being the world leader in nitinol stone extractor technologies.

The NCompass Nitinol Stone Extractor is used for stone manipulation and removal in the urinary tract. The extractors are supplied sterile in peel-open packages.

| Order Number                            | Reference Part Number | Fr  | Length cm | Basket Diameter cm | Basket Configuration | Tip Configuration |
|-----------------------------------------|-----------------------|-----|-----------|--------------------|----------------------|-------------------|
| <b>NCompass Nitinol Stone Extractor</b> |                       |     |           |                    |                      |                   |
| G46027                                  | NCT4-017115           | 1.7 | 115       | 1.0                | 4 wire, 16 wire      | tipless           |
| G32701                                  | NCT4-024115           | 2.4 | 115       | 1.0                | 4 wire, 16 wire      | tipless           |
| G32863                                  | NCT4-024115-MB        | 2.4 | 115       | 1.5                | 4 wire, 16 wire      | tipless           |
| G32702                                  | NC3-024115            | 2.4 | 115       | 1.5                | 3 wire, 12 wire      | occlusive tip     |

Not all part numbers shown on this product information sheet may be approved for sale in all regulatory jurisdictions. Consult with your local Cook representative or customer service center for details.

### Customer Service Centers - Urology

**EMEA:** EDI - [www.cookmedical.com/edi.do](http://www.cookmedical.com/edi.do)  
 Distributors: +353 61239240, [ssc.distributors@cookmedical.com](mailto:ssc.distributors@cookmedical.com)  
 Austria: +43 179567121, [oe.orders@cookmedical.com](mailto:oe.orders@cookmedical.com)  
 Belgium: +32 27001633, [be.orders@cookmedical.com](mailto:be.orders@cookmedical.com)  
 Denmark: +45 38487607, [da.orders@cookmedical.com](mailto:da.orders@cookmedical.com)  
 Finland: +358 972519996, [fi.orders@cookmedical.com](mailto:fi.orders@cookmedical.com)  
 France: +33 171230269, [fr.orders@cookmedical.com](mailto:fr.orders@cookmedical.com)  
 Germany: +49 6950072804, [de.orders@cookmedical.com](mailto:de.orders@cookmedical.com)  
 Hungary: +36 17779199, [hu.orders@cookmedical.com](mailto:hu.orders@cookmedical.com)  
 Ireland: +353 61239252, [ie.orders@cookmedical.com](mailto:ie.orders@cookmedical.com)  
 Italy: +39 0269682853, [it.orders@cookmedical.com](mailto:it.orders@cookmedical.com)  
 Netherlands: +31 202013367, [nl.orders@cookmedical.com](mailto:nl.orders@cookmedical.com)  
 Norway: +47 23162968, [no.orders@cookmedical.com](mailto:no.orders@cookmedical.com)  
 Poland: +48 223060159, [pl.orders@cookmedical.com](mailto:pl.orders@cookmedical.com)  
 Spain: +34 912702691, [es.orders@cookmedical.com](mailto:es.orders@cookmedical.com)  
 Sweden: +46 858769468, [se.orders@cookmedical.com](mailto:se.orders@cookmedical.com)  
 Switzerland - French: +41 448009609, [fr.orders@cookmedical.com](mailto:fr.orders@cookmedical.com)  
 Switzerland - Italian: +41 448009609, [it.orders@cookmedical.com](mailto:it.orders@cookmedical.com)  
 Switzerland - German: +41 448009609, [de.orders@cookmedical.com](mailto:de.orders@cookmedical.com)  
 United Kingdom: +44 2073654183, [uk.orders@cookmedical.com](mailto:uk.orders@cookmedical.com)

[www.cookmedical.com](http://www.cookmedical.com)

**Americas:** EDI - [www.cookmedical.com/edi.do](http://www.cookmedical.com/edi.do)  
 Phone: +1 812.339.2235, 800.457.4500, Fax: 800.554.8335  
 E-mail: [orders@cookmedical.com](mailto:orders@cookmedical.com)

**Australia:**  
 Phone: +61 738411188, 1800777222, Fax: +61 738411288, 1800077283  
 E-mail: [cau.custserv@cookmedical.com](mailto:cau.custserv@cookmedical.com)

