

Prevent retrograde
stone migration
during lithotripsy.



NTrap[®]
NITINOL STONE EXTRACTOR



www.cookmedical.com

NTrap[®]

NITINOL STONE EXTRACTOR

NTrap continues the groundbreaking series of nitinol designs from Cook Medical, the world leader in nitinol basket technologies.

When deployed in the ureter, the NTrap's intricately woven, multi-wire design provides an occlusive umbrella, preventing retrograde stone migration during intracorporeal lithotripsy.

Features

Occlusive Design	Patented, woven wire design prevents the migration of fragments as small as 1 mm during intracorporeal lithotripsy. ¹
------------------	--

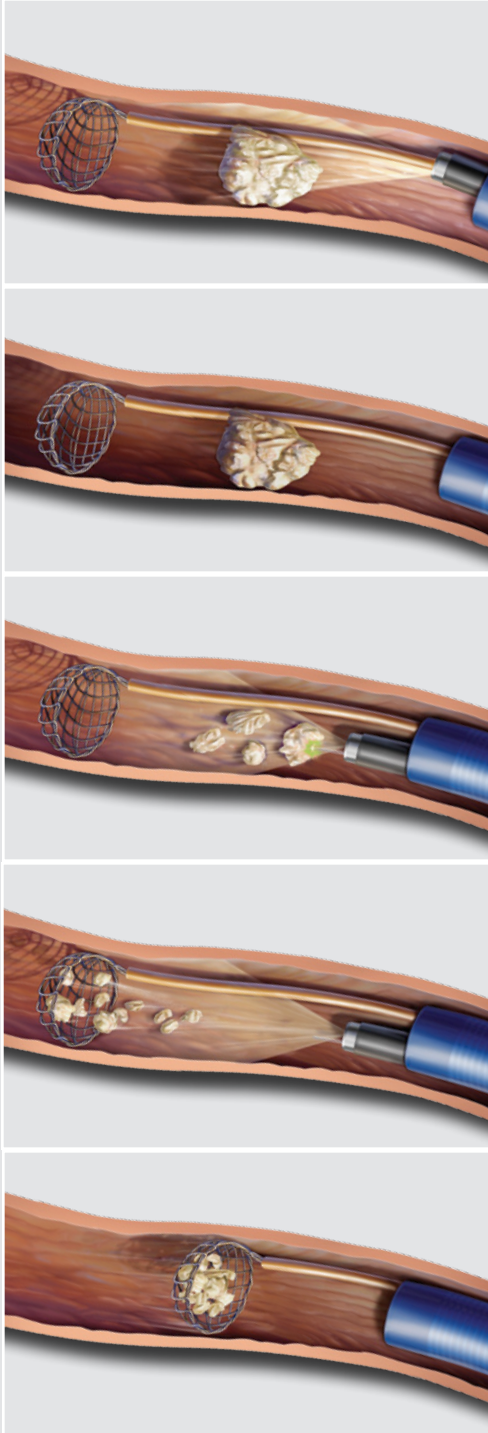
Stone Release	Flexible umbrella design readily releases stones too large for extraction. ²
---------------	---

145 cm Length	145 cm length allows for expeditious scope exchange after placement under direct vision.
---------------	--

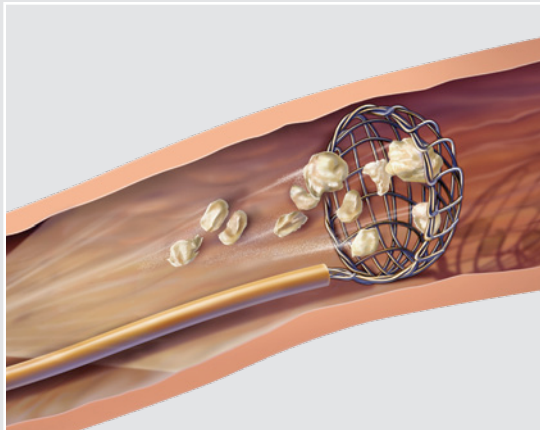
Nitinol Alloy	Resilient memory characteristics retain preformed shape when deployed.
---------------	--

1. Holley PG, Sharma SK, Perry KT, et al. Assessment of novel ureteral occlusion device and comparison with stone cone in prevention of stone migration during lithotripsy. *J Endourol.* 2005;19(2):200-203.

2. Ouwenga MK, Sharma SK, Holley P, et al. Load-release points of two novel ureteral stone-trapping devices. *J Endourol.* 2005;19(7):894-897.



- 1 At deployment, the NTrap should be positioned under direct vision through the endoscope. Once the NTrap is safely beyond the ureteral stone, it is deployed to occlude the ureter.
- 2 Leaving the NTrap deployed above the stone, the endoscope may now be easily removed to free up the working channel and optimize irrigant flow. Utilization of a previously placed Flexor® Ureteral Access Sheath will ease this process and protect the ureter during instrument exchanges.
- 3 After reintroduction of the endoscope through the access sheath, an intracorporeal lithotripter may now be utilized to fragment the stone. Maintain a safe distance between all intracorporeal lithotripters and the NTrap during stone fragmentation. Care should be taken when utilizing Holmium Lasers to avoid firing the laser directly on the NTrap.
- 4 During intracorporeal lithotripsy, the NTrap prevents migration of stones and stone fragments as small as 1 mm.¹
- 5 After successful fragmentation of the stone, the NTrap is utilized to entrap remaining stone fragments for extraction. The highly flexible nitinol wires are designed to readily and safely disengage from any stone fragment that is too large for safe extraction.² Again, a ureteral access sheath may be used to provide a protected conduit for instrument and stone removal.



NTrap®

NITINOL STONE EXTRACTOR

NTrap is an endoscopic entrapment and extraction device for the removal of calculi and other foreign bodies in the urinary tract. It effectively minimizes stone migration during laser, ultrasonic, electrohydraulic or pneumatic lithotripsy. Supplied sterile in peel-open packages.

Order Number	Reference Part Number	Sheath Fr	Length cm	Configuration
G32724	NTP-028145	2.8	145	7 mm umbrella design

Not all part numbers shown on this product information sheet may be approved for sale in all regulatory jurisdictions. Consult with your local Cook representative or customer service center for details.

Customer Service Centers - Urology

EMEA: EDI - www.cookmedical.com/edi.do
 Distributors: +353 61239240, ssc.distributors@cookmedical.com
 Austria: +43 179567121, oe.orders@cookmedical.com
 Belgium: +32 27001633, be.orders@cookmedical.com
 Denmark: +45 38487607, da.orders@cookmedical.com
 Finland: +358 972519996, fi.orders@cookmedical.com
 France: +33 171230269, fr.orders@cookmedical.com
 Germany: +49 6950072804, de.orders@cookmedical.com
 Hungary: +36 17779199, hu.orders@cookmedical.com
 Ireland: +353 61239252, ie.orders@cookmedical.com
 Italy: +39 0269682853, it.orders@cookmedical.com
 Netherlands: +31 202013367, nl.orders@cookmedical.com
 Norway: +47 23162968, no.orders@cookmedical.com
 Poland: +48 223060159, pl.orders@cookmedical.com
 Spain: +34 912702691, es.orders@cookmedical.com
 Sweden: +46 858769468, se.orders@cookmedical.com
 Switzerland - French: +41 448009609, fr.orders@cookmedical.com
 Switzerland - Italian: +41 448009609, it.orders@cookmedical.com
 Switzerland - German: +41 448009609, de.orders@cookmedical.com
 United Kingdom: +44 2073654183, uk.orders@cookmedical.com

www.cookmedical.com

Americas: EDI - www.cookmedical.com/edi.do
 Phone: +1 812.339.2235, 800.457.4500, Fax: 800.554.8335
 E-mail: orders@cookmedical.com

Australia:
 Phone: +61 738411188, 1800777222, Fax: +61 738411288, 1800077283
 E-mail: cau.custserv@cookmedical.com

